

KINSHOFER

The use of a wallboard fork is an efficient and time saving method of delivering sheets of drywalls. It is easier and safer for the workers on site to remove the vertical sheets because of the folding of the fork and the accurate positioning with the KINSHOFER rotator.



Load sheets vertically and clamp.



Easy positioning of semi-tapered forged tines, equipped with rollers to protect the sheets. Pads prevent damage during unloading.



The integrated counterbalance valve prevents unintentional opening of the fork and tipping of the load.

The hinged lower section allows horizontally stored sheets of wallboard to be lifted and folded into a vertical position and clamped between the tines and support beam, preventing the wallboards from sliding during handling. In the event of a pressure drop in the hydraulic system, caused by a broken hose or some other malfunction, an integrated counterbalance valve prevents the fork from opening.

model *	capacity (lbs)	line spread (in)	flat lift height (A) (in)	throat (B) (in)	weight (lbs)
KM 461-48/63/18	6000	63	48	18	891
KM 461-48/72/18		72			913
KM 461-48/84/18		84			924
KM 461-48/63/22	6000	63	48	22	902
KM 461-48/72/22		72			924
KM 461-48/84/22		84			935
KM 461-54/63/18	6000	63	54	18	913
KM 461-54/72/18		72			968
KM 461-54/84/18		84			979
KM 461-54/63/22	6000	63	54	22	924
KM 461-54/72/22		72			979
KM 461-54/84/22		84			990

Operating pressure: 3000 PSI

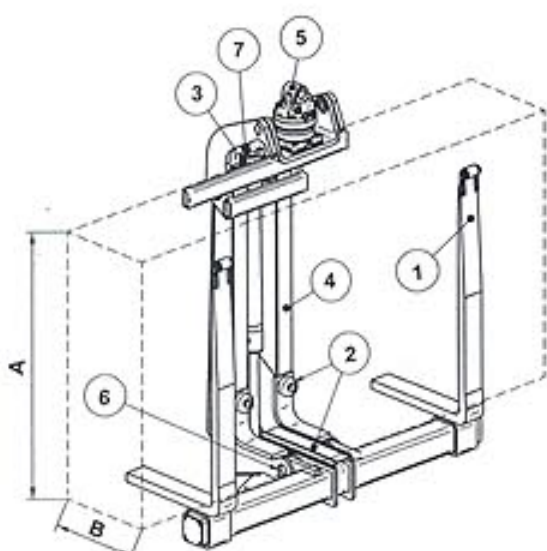
Package includes wallboard fork, rotator, cardan link, and hose kit.

Battery powered models

Battery Wallboard Forks are independent from external hydraulic systems and work on jobsite tower cranes and telescopic truck cranes.

model *	capacity (lbs)	line spread (in)	flat lift height (A) (in)	throat (B) (in)	weight (lbs)
BWB296-00-6022	4500	60	54	22.5	715
BWB296-00-6027	6000	60	54	27.5	890

* additional models available on demand



Highlights:

1. Forged tines, semi tapered; tips equipped with rollers
2. Center pad and plastic spacers to prevent damage to sheets
3. SUN™ counterbalance valve integrated in cylinder head
4. One piece robot-welded center and top section
5. KINSHOFER gear type rotator, no additional brake necessary, forged steel rotator head
6. Usage of chromed pins and bronze bushings
7. Cylinder protective guard
8. Sturdy and reliable design